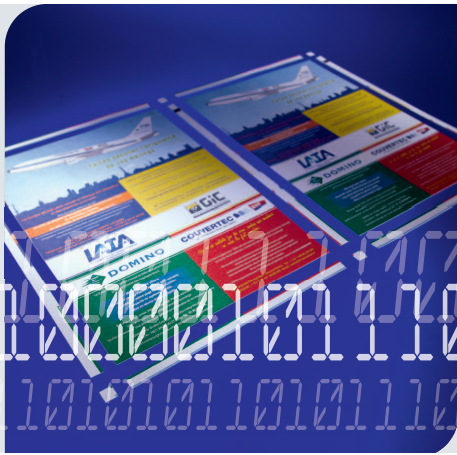


# Discover Hunkeler



Excellence in Paper Processing

## High performance cutting solution



**Excellence in paper processing:** find out for yourself what our high standards mean. Benefit from synergies between our product segments and choose an expert partner. Meet your high expectations. We look forward to a dialogue.

**Digital:** advanced pre- and post solutions for high performance digital printing systems, for print on demand, computer centers and direct mailing.

**Web finishing:** modular systems to produce application-based organizational, communication and advertising media.



Excellence in Paper Processing

[www.hunkeler.ch](http://www.hunkeler.ch) | [info@hunkeler.ch](mailto:info@hunkeler.ch)

**Hunkeler AG**  
Bahnhofstrasse 31  
CH-4806 Wikon  
  
Phone: +41-62 745 61 61  
Fax: +41-62 745 62 76  
[info@hunkeler.ch](mailto:info@hunkeler.ch)

**Hunkeler Deutschland GmbH**  
Bergstrasse 15  
D-82024 Taufkirchen  
  
Phone: +49-89 614 1590  
Fax: +49-89 612 8400  
[info@hunkeler.de](mailto:info@hunkeler.de)

**Hunkeler Far East Ltd.**  
Room 1001, East Town Bldg. 41,  
Lockhard Road  
Wanchai, Hong Kong  
Phone: +852-2528 4082  
Fax: +852-2866 2401  
[info@hunkeler.hk](mailto:info@hunkeler.hk)

© 2012 by Hunkeler AG | 03 - 12 | e6



## The ultimative cutting system

The modular Hunkeler high speed roll to cut solution for sheeted output offline or inline with digital continuous feed printing systems. Optional slit-merge or plow folding with the variable chip-out rotary double cutter for full bleed products in the Direct Mail and POD markets.

### UW6 Unwind module

The new generation unwinder UW6 was specifically designed for a flexible, high-performance environment. Ease of use, enabled by the automatic dancer control system, and user guide with touch panel reduce setup times to a minimum. Rolls with diameters of up to 1370 mm are loaded semi-automatically. A triple dancer guarantees optimum acceleration of the web, and provides for the processing of a wide range of paper weights. The dancer weight can be decoupled completely by the loop control to allow for tension free feed into high-performance digital printers and cutters.

### CS6 Cross- and length cutter

The rotary cross cutter CS6 consistently produces clean, accurate cuts at exact angles, ensuring the highest levels of productivity and quality of output. In combination with the register control software, it also provides the precision essential to the finishing process. Setups, as well as adjustments are easily performed at the display panel. The new Line-PC permits unlimited storage of various job data, offering automatic set up and make ready of previously stored job processing data by the touch of a button. An integrated diverter separates waste from the production output. If equipped with the new, individually driven edge trimmers, and up to three linear cutters, the production of 4-up forms is accomplished reliably and efficiently.

### CS6-I «Single Cut»

This version of the CS6 is equipped with a single rotary cutter for the production of traditional single cut forms in the print-on-demand and transactional printing segments.



### CS6-II «Double Cut»

The flexible high performance solution for mailing applications. By means of two independent, dynamically controlled rotary cutters, full bleed products are produced swiftly and accurately.



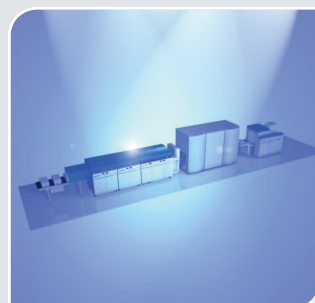
### Technical Data Cutter CS6

Web width:	6.5" – 20.5"	(165 – 520 mm)
Cut length:	5.5" – 62"	(135 – 1575 mm)
Variable chip-out:	1/8" – 2 3/4"	(3.2 – 70 mm)
Paper weight:	40 – 300 gsm *	
Production speed:	up to 600 ft/min (180 m/min)	
Applications:	1 up – 4 up with gutter cut	
Option:	merger + plow folder	dynamic cut lengths

\*Below 60 gsm and above 250 gsm require paper test.

All technical data subject to change

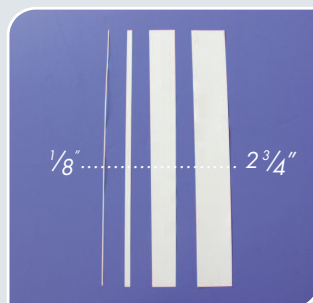
### Features



Stand alone offline, or inline with digital printers



Light weight and heavy weight paper application



Electronic variable double cut/chip-out



Production speed up to 600 ft/min (180 m/min)

## Flexible solution for direct mailings

### High Reliability

Rotary scissor cut technology guarantees highest reliability and precise, consistently accurate cuts, creating minimal dust. Integrated carbide knives allow for more than 30 Mio cuts between knives changes. The CS6 offers a service friendly layout, accompanied by state-of-the-art drive technology and ergonomic design.

### Flexibility

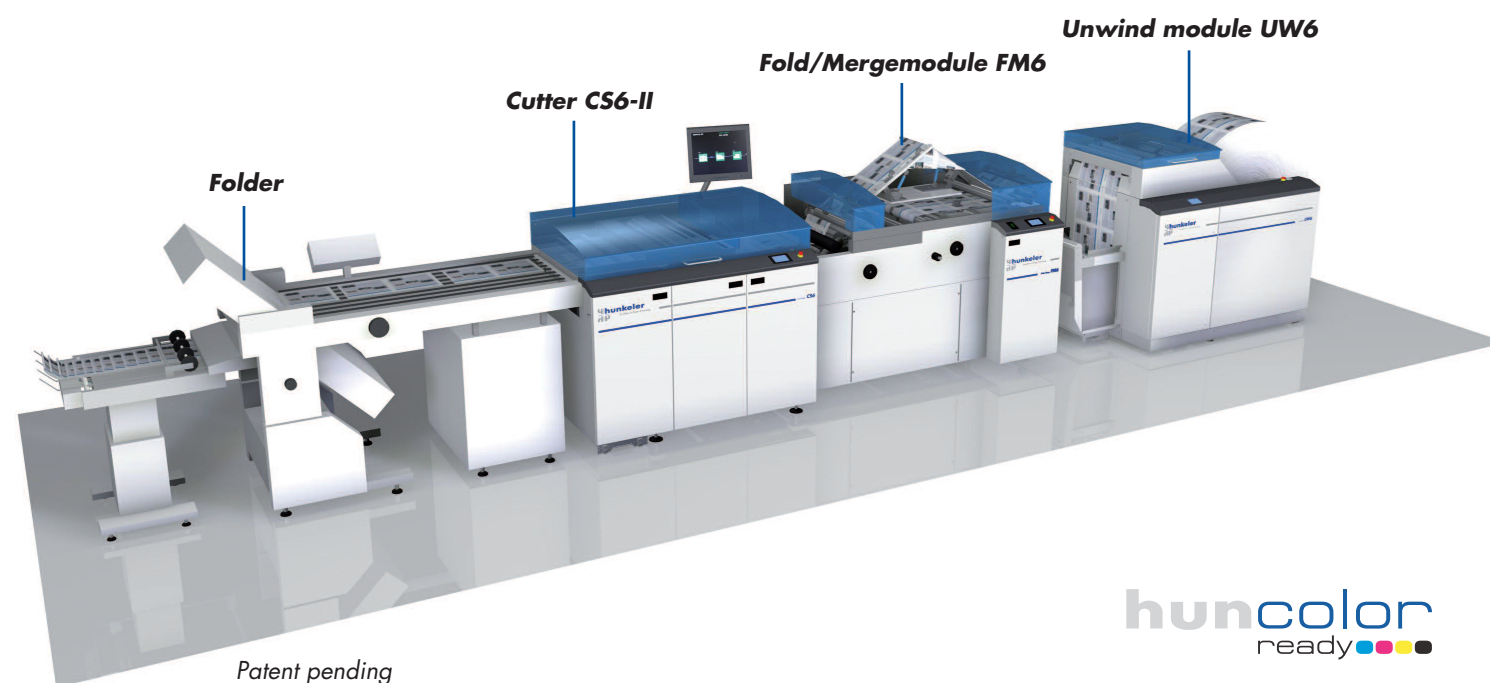
The CS6 proficiently cuts any sheeted products, from fullbleed forms to signatures, deriving its high level of flexibility from a wide variety of chip-out sizes and cut off lengths. Optional dynamic cut lengths. Undemanding operation by touch screen and Line-PC, programmed in a number of different languages, as well memory functions for machine set-up increase ease of operation and productivity.

### Investment protection

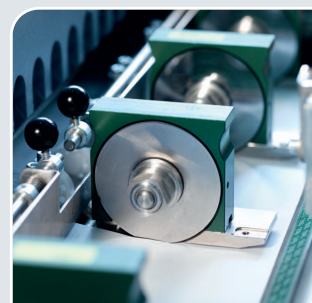
By processing paper weights from 40 to 300 gsm, and operating at speeds of up to 600 ft/min, the CS6 fulfills tomorrow's requirements of the market. The dynamic diversion of waste or blank sheets leads to an efficient downstream process that no longer requires manual intervention.

### Modular concept

This allows for flexible customization to your specific requirements. The line, for instance, can be expanded either with a web-merger module WM6 or the combination module plow-folder/web-merger FM6 to create an universal high speed mailing system.



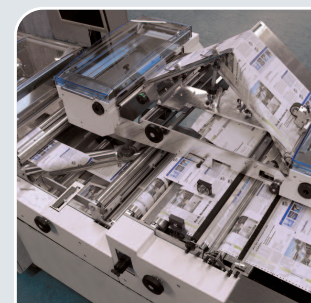
huncolor  
ready



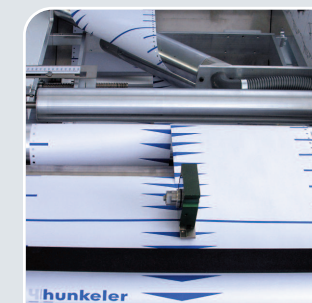
Driven edge trimmers, and up to three linear cutters



Integrated diverter for set up and error pages



FM6 combines plow-folding and slit-merge functions



WM6-even: cuts the web and merges these within register